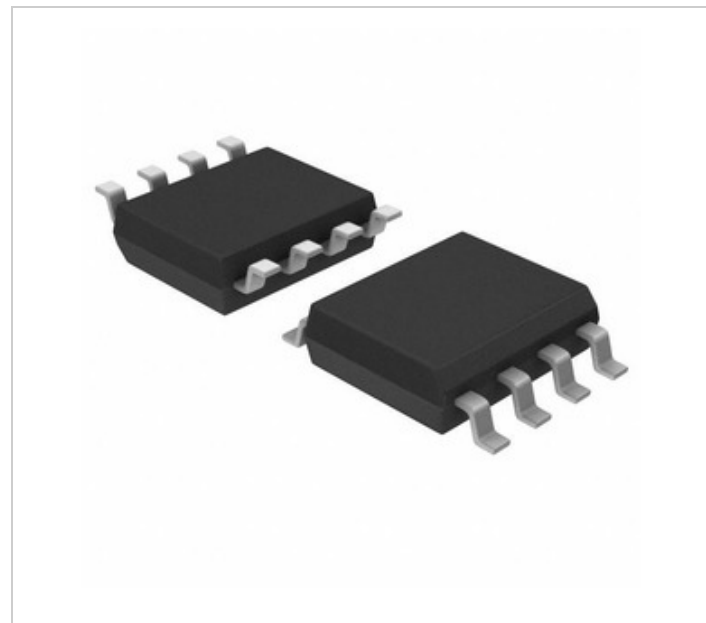


**JRC Corporation / NJRC**

## NJU7662M

Part Number: NJU7662M  
 Manufacturer/Brand: JRC Corporation / NJRC  
 Product description: IC REG SWTCHD CAP INV RATIO 8DMP  
 Datasheets: [NJU7662M.pdf](#)  
 RoHs Status: Lead free / RoHS Compliant  
 Ship From: Hong Kong  
 Shipment Way: DHL/Fedex/TNT/UPS/EMS



[REQUEST FOR QUOTATION](#)

Image may be representation. See specifications for product details.

### Specifications of NJU7662M

PART NUMBER	NJU7662M
MANUFACTURER	JRC Corporation / NJRC
DESCRIPTION	IC REG SWTCHD CAP INV RATIO 8DMP
LEAD FREE STATUS / ROHS STATUS	Lead free / RoHS Compliant
DATA SHEET	<a href="#">NJU7662M.pdf</a>
VOLTAGE - OUTPUT (MIN/FIXED)	-Vin, 2Vin
VOLTAGE - OUTPUT (MAX)	-
VOLTAGE - INPUT (MIN)	4.5V
VOLTAGE - INPUT (MAX)	20V
TOPOLOGY	Charge Pump
SYNCHRONOUS RECTIFIER	No
SUPPLIER DEVICE PACKAGE	8-DMP
SERIES	-
PACKAGING	Tube
PACKAGE / CASE	8-SOIC (0.209", 5.30mm Width)
OUTPUT TYPE	Fixed
OUTPUT CONFIGURATION	Positive or Negative
OTHER NAMES	NJU#7662M NJU#7662M-ND NJU7662M# NJU7662M#-ND
OPERATING TEMPERATURE	-20°C ~ 70°C (TA)
NUMBER OF OUTPUTS	1
MOUNTING TYPE	Surface Mount
MOISTURE SENSITIVITY LEVEL (MSL)	1 (Unlimited)
MANUFACTURER STANDARD LEAD TIME	12 Weeks
LEAD FREE STATUS / ROHS STATUS	Lead free / RoHS Compliant
FUNCTION	Ratiometric
FREQUENCY - SWITCHING	10kHz
DETAILED DESCRIPTION	Charge Pump Switching Regulator IC Positive or Negative Fixed -Vin, 2Vin 1 Output 8-SOIC (0.209", 5.30mm Width)
CURRENT - OUTPUT	-

### Related Tags

JRC Corporation / NJRC NJU7662M	NJU7662M Distributor	NJU7662M Supplier
NJU7662M Price	NJU7662M Pictures	NJU7662M Image
NJU7662M PDF Datasheet	NJU7662M Download Datasheet	NJU7662M Datasheet
NJU7662M Stock	Buy NJU7662M	Buy JRC Corporation / NJRC NJU7662M
JRC Corporation / NJRC NJU7662M	JRC Corporation / NJRC Supplier	JRC Corporation / NJRC Distributor
JRC Corporation / NJRC NJU7662M	NJR NJU7662M	NJR Corporation/NJRC NJU7662M

### Related Products

<p><b>NJU7665CF-TE1</b>                  Manufacturers: JRC Corporation / NJRC                  Description: IC REG SWTCHD CAP INV 10MA MTP5                  In stock: Out stock  <a href="#">RFQ</a></p>	<p><b>NJU7670M</b>                  Manufacturers: JRC Corporation / NJRC                  Description: IC REG SWTCHD CAP NVIN 14DMP                  In stock: Out stock  <a href="#">RFQ</a></p>
<p><b>NJU7670D</b>                  Manufacturers: JRC Corporation / NJRC                  Description: IC REG SWTCHD CAP NVIN 14DIP                  In stock: Out stock  <a href="#">RFQ</a></p>	<p><b>NJU7665BF-TE1</b>                  Manufacturers: JRC Corporation / NJRC                  Description: IC REG SWTCHD CAP INV 5MA MTP5                  In stock: Out stock  <a href="#">RFQ</a></p>
<p><b>NJU7662D</b>                  Manufacturers: JRC Corporation / NJRC                  Description: IC REG SWTCHD CAP INV RATIO 8DIP                  In stock: Out stock  <a href="#">RFQ</a></p>	<p><b>NJU7665AF-TE1#</b>                  Manufacturers: JRC Corporation / NJRC                  Description: IC REG SWTCHD CAP INV MTP5                  In stock: Out stock  <a href="#">RFQ</a></p>
<p><b>NJU7600RB1-TE1#</b>                  Manufacturers: JRC Corporation / NJRC                  Description: IC REG BOOST FLYBACK ADJ 8TVSP                  In stock: Out stock  <a href="#">RFQ</a></p>	<p><b>NJU7660M</b>                  Manufacturers: JRC Corporation / NJRC                  Description: IC REG SWTCHD CAP INV RATIO 8DMP                  In stock: Out stock  <a href="#">RFQ</a></p>
<p><b>NJU7665AF-TE1</b>                  Manufacturers: JRC Corporation / NJRC                  Description: IC REG SWTCHD CAP INV MTP5                  In stock: 363 pcs  <a href="#">RFQ</a></p>	<p><b>NJU7600RB1-TE1</b>                  Manufacturers: JRC Corporation / NJRC                  Description: IC REG BOOST FLYBACK ADJ 8TVSP                  In stock: 761 pcs  <a href="#">RFQ</a></p>
<p><b>NJU7660AM-TE1</b>                  Manufacturers: JRC Corporation / NJRC                  Description: IC REG SWTCHD CAP INV RATIO 8DMP                  In stock: Out stock  <a href="#">RFQ</a></p>	<p><b>NJU7660D</b>                  Manufacturers: JRC Corporation / NJRC                  Description: IC REG SWTCHD CAP INV RATIO 8DIP                  In stock: Out stock  <a href="#">RFQ</a></p>