




LD39100PURY

Part Number:	LD39100PURY
Manufacturer/Brand:	STMicroelectronics
Product description:	IC REG LINEAR POS ADJ 1A 6DFN
Datasheets:	1.LD39100PURY.pdf 2.LD39100PURY.pdf
RoHs Status:	 Lead free / RoHS Compliant
Ship From:	Hong Kong
Shipment Way:	DHL/Fedex/TNT/UPS/EMS

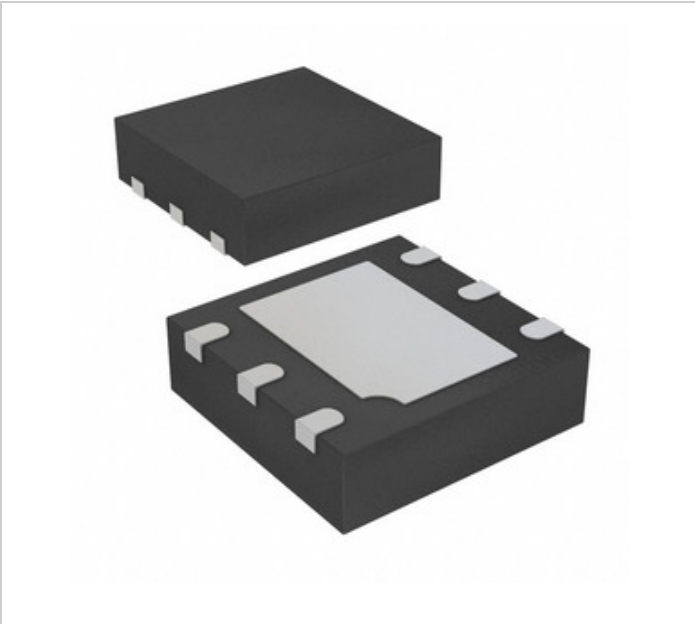


Image may be representation. See specifications for product details.

[REQUEST FOR QUOTATION](#)

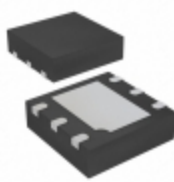
Specifications of LD39100PURY

PART NUMBER	LD39100PURY
MANUFACTURER	STMicroelectronics
DESCRIPTION	IC REG LINEAR POS ADJ 1A 6DFN
LEAD FREE STATUS / ROHS STATUS	Lead free / RoHS Compliant
DATA SHEET	1.LD39100PURY.pdf 2.LD39100PURY.pdf
VOLTAGE DROPOUT (MAX)	0.4V @ 1A
VOLTAGE - OUTPUT (MIN/FIXED)	0.8V
VOLTAGE - OUTPUT (MAX)	4.6V
VOLTAGE - INPUT (MAX)	5.5V
SUPPLIER DEVICE PACKAGE	6-DFN (3x3)
SERIES	Automotive, AEC-Q100
PROTECTION FEATURES	Over Current, Over Temperature, Short Circuit
PACKAGING	Tape & Reel (TR)
PACKAGE / CASE	6-VDFN Exposed Pad
PSRR	70dB ~ 65dB (1kHz ~ 10kHz)
OUTPUT TYPE	Adjustable
OUTPUT CONFIGURATION	Positive
OTHER NAMES	497-16701-2
OPERATING TEMPERATURE	-40°C ~ 125°C
NUMBER OF REGULATORS	1
MOUNTING TYPE	Surface Mount
MOISTURE SENSITIVITY LEVEL (MSL)	3 (168 Hours)
MANUFACTURER STANDARD LEAD TIME	40 Weeks
LEAD FREE STATUS / ROHS STATUS	Lead free / RoHS Compliant
DETAILED DESCRIPTION	Linear Voltage Regulator IC Positive Adjustable 1 Output 0.8 V ~ 4.5 V 1A 6-DFN (3x3)
CURRENT - SUPPLY (MAX)	300µA
CURRENT - QUIESCENT (IQ)	50µA
CURRENT - OUTPUT	1A
CONTROL FEATURES	Enable, Power Good

Related Tags

STMicroelectronics LD39100PURY	LD39100PURY Distributor	LD39100PURY Supplier
LD39100PURY Price	LD39100PURY Pictures	LD39100PURY Image
LD39100PURY PDF Datasheet	LD39100PURY Download Datasheet	LD39100PURY Datasheet
LD39100PURY Stock	Buy LD39100PURY	Buy STMicroelectronics LD39100PURY
STMicroelectronics LD39100PURY	STMicroelectronics Supplier	STMicroelectronics Distributor
STMicroelectronics LD39100PURY		

Related Products

 <p>LD39115J12R Manufacturers: STMicroelectronics Description: IC REG LIN 1.2V 150MA 4FLIPCHIP In stock: Out stock RFQ</p>	 <p>LD39115J14R Manufacturers: STMicroelectronics Description: IC REG LIN 1.4V 150MA 4FLIPCHIP In stock: Out stock RFQ</p>
 <p>LD39100PU12R Manufacturers: STMicroelectronics Description: IC REG LINEAR 1.2V 1A 6DFN In stock: Out stock RFQ</p>	 <p>LD39100PU33R Manufacturers: STMicroelectronics Description: IC REG LINEAR 3.3V 1A 6DFN In stock: Out stock RFQ</p>
 <p>LD39100PU33RY Manufacturers: STMicroelectronics Description: IC REG LINEAR 3.3V 1A 6DFN In stock: Out stock RFQ</p>	 <p>LD39115J18R Manufacturers: STMicroelectronics Description: IC REG LIN 1.8V 150MA 4FLIPCHIP In stock: Out stock RFQ</p>
 <p>LD39115J10R Manufacturers: STMicroelectronics Description: IC REG LINEAR 1V 150MA 4FLIPCHIP In stock: Out stock RFQ</p>	 <p>LD39115J15R Manufacturers: STMicroelectronics Description: IC REG LIN 1.5V 150MA 4FLIPCHIP In stock: Out stock RFQ</p>
 <p>LD39100PUR Manufacturers: STMicroelectronics Description: IC REG LINEAR POS ADJ 1A 6DFN In stock: Out stock RFQ</p>	 <p>LD39115J25R Manufacturers: STMicroelectronics Description: IC REG LIN 2.5V 150MA 4FLIPCHIP In stock: Out stock RFQ</p>
 <p>LD39100PU18RY Manufacturers: STMicroelectronics Description: IC REG LINEAR 1.8V 1A 6DFN In stock: Out stock RFQ</p>	 <p>LD39100PU12RY Manufacturers: STMicroelectronics Description: IC REG LINEAR 1.2V 1A 6DFN In stock: Out stock RFQ</p>