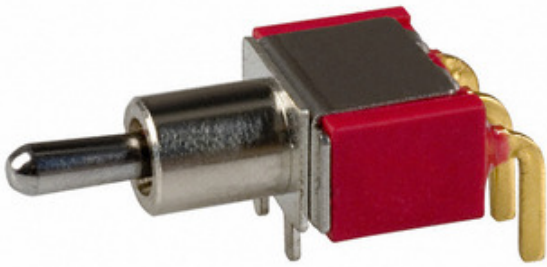




Carling Technologies

## 2M1-SP3-T2-B4-M6RE

|                      |  |
|----------------------|--|
| Part Number:         | 2M1-SP3-T2-B4-M6RE                     |
| Manufacturer/Brand:  | Carling Technologies                   |
| Product description: | SWITCH TOGGLE SPDT 0.4VA 20V           |
| Datasheets:          | <a href="#">2M1-SP3-T2-B4-M6RE.pdf</a> |
| RoHS Status:         | Lead free / RoHS Compliant             |
| Ship From:           | Hong Kong                              |
| Shipment Way:        | DHL/Fedex/TNT/UPS/EMS                  |



[REQUEST FOR QUOTATION](#)

Image may be representation. See specifications for product details.

### Specifications of 2M1-SP3-T2-B4-M6RE

|                                  |  |
|----------------------------------|--|
| PART NUMBER                      | 2M1-SP3-T2-B4-M6RE                           |
| MANUFACTURER                     | Carling Technologies                         |
| DESCRIPTION                      | SWITCH TOGGLE SPDT 0.4VA 20V                 |
| LEAD FREE STATUS / ROHS STATUS   | Lead free / RoHS Compliant                   |
| DATA SHEET                       | <a href="#">2M1-SP3-T2-B4-M6RE.pdf</a>       |
| VOLTAGE RATING - DC              | 20V  |
| VOLTAGE RATING - AC              | 20V  |
| TERMINATION STYLE                | PC Pin                                       |
| SWITCH FUNCTION                  | On-Off-On                                    |
| SERIES                           | 2M   |
| PANEL CUTOUT DIMENSIONS          | -  |
| PACKAGING                        | Bulk   |
| OTHER NAMES                      | 2M1-00000036<br>432-1165                     |
| OPERATING TEMPERATURE            | -30°C ~ 85°C                                 |
| MOUNTING TYPE                    | Through Hole, Right Angle                    |
| MOISTURE SENSITIVITY LEVEL (MSL) | 1 (Unlimited)                                |
| MANUFACTURER STANDARD LEAD TIME  | 10 Weeks                                     |
| LEAD FREE STATUS / ROHS STATUS   | Lead free / RoHS Compliant                   |
| INGRESS PROTECTION               | -  |
| ILLUMINATION VOLTAGE (NOMINAL)   | -  |
| ILLUMINATION TYPE, COLOR         | -  |
| ILLUMINATION                     | Non-Illuminated                              |
| FEATURES                         | Epoxy Sealed Terminals                       |
| ELECTRICAL LIFE                  | 50,000 Cycles                                |
| DETAILED DESCRIPTION             | Toggle Switch SPDT Through Hole, Right Angle |
| CURRENT RATING                   | 0.4VA (AC/DC)                                |
| CIRCUIT                          | SPDT   |
| BUSHING THREAD                   | Unthreaded                                   |
| ACTUATOR TYPE                    | Standard Round                               |
| ACTUATOR MATERIAL                | Brass, Chrome Plated                         |
| ACTUATOR LENGTH                  | 5.40mm                                       |

### Related Tags

|   |   |   |
|---|---|---|
| <a href="#">Carling Technologies 2M1-SP3-T2-B4-M6RE</a> | <a href="#">2M1-SP3-T2-B4-M6RE Distributor</a>        | <a href="#">2M1-SP3-T2-B4-M6RE Supplier</a>                 |
| <a href="#">2M1-SP3-T2-B4-M6RE Price</a>                | <a href="#">2M1-SP3-T2-B4-M6RE Pictures</a>           | <a href="#">2M1-SP3-T2-B4-M6RE Image</a>                    |
| <a href="#">2M1-SP3-T2-B4-M6RE PDF Datasheet</a>        | <a href="#">2M1-SP3-T2-B4-M6RE Download Datasheet</a> | <a href="#">2M1-SP3-T2-B4-M6RE Datasheet</a>                |
| <a href="#">2M1-SP3-T2-B4-M6RE Stock</a>                | <a href="#">Buy 2M1-SP3-T2-B4-M6RE</a>                | <a href="#">Buy Carling Technologies 2M1-SP3-T2-B4-M6RE</a> |
| <a href="#">Carling Technologies 2M1-SP3-T2-B4-M6RE</a> | <a href="#">Carling Technologies Supplier</a>         | <a href="#">Carling Technologies Distributor</a>            |
| <a href="#">Carling Technologies 2M1-SP3-T2-B4-M6RE</a> |   |   |

### Related Products

|  |  |
|--|--|
| <p><b>2M1-SP4-T1-B1-M1QE</b><br/>Manufacturers: Carling Technologies<br/>Description: SWITCH TOGGLE SPDT 5A 125V<br/>In stock: 679 pcs<br/><a href="#">RFQ</a></p>   | <p><b>2M1-SP2-T6-B1-M1QE</b><br/>Manufacturers: Carling Technologies<br/>Description: SWITCH TOGGLE SPDT 5A 125V<br/>In stock: 486 pcs<br/><a href="#">RFQ</a></p>   |
| <p><b>2M1-SP3-T1-B1-M1QE</b><br/>Manufacturers: Carling Technologies<br/>Description: SWITCH TOGGLE SPDT 5A 125V<br/>In stock: 569 pcs<br/><a href="#">RFQ</a></p>   | <p><b>2M1-SP3-T1-B9-M1QE</b><br/>Manufacturers: Carling Technologies<br/>Description: SWITCH TOGGLE SPDT 5A 125V<br/>In stock: Out stock<br/><a href="#">RFQ</a></p> |
| <p><b>2M1-SP3-T8-B0-M1QE</b><br/>Manufacturers: Carling Technologies<br/>Description: SWITCH TOGGLE SPDT 5A 125V<br/>In stock: Out stock<br/><a href="#">RFQ</a></p> | <p><b>2M1-SP5-T1-B1-M1QE</b><br/>Manufacturers: Carling Technologies<br/>Description: SWITCH TOGGLE SPDT 5A 125V<br/>In stock: 612 pcs<br/><a href="#">RFQ</a></p>   |
| <p><b>2M1-SP3-T1-B1-M2QE</b><br/>Manufacturers: Carling Technologies<br/>Description: SWITCH TOGGLE SPDT 5A 125V<br/>In stock: Out stock<br/><a href="#">RFQ</a></p> | <p><b>2M1-SP2-T8-B0-M1QE</b><br/>Manufacturers: Carling Technologies<br/>Description: SWITCH TOGGLE SPDT 5A 125V<br/>In stock: Out stock<br/><a href="#">RFQ</a></p> |
| <p><b>2M110Z A0G</b><br/>Manufacturers: TSC (Taiwan Semiconductor)<br/>Description: DIODE ZENER 110V 2W DO204AC<br/>In stock: Out stock<br/><a href="#">RFQ</a></p>  | <p><b>2M100Z R0G</b><br/>Manufacturers: TSC (Taiwan Semiconductor)<br/>Description: DIODE ZENER 100V 2W DO204AC<br/>In stock: Out stock<br/><a href="#">RFQ</a></p>  |
| <p><b>2M1-SP2-T2-B4-M6RE</b><br/>Manufacturers: Carling Technologies<br/>Description: SWITCH TOGGLE SPDT 0.4VA 20V<br/>In stock: 427 pcs<br/><a href="#">RFQ</a></p> | <p><b>2M1-SP3-T6-B1-M1QE</b><br/>Manufacturers: Carling Technologies<br/>Description: SWITCH TOGGLE SPDT 5A 125V<br/>In stock: 500 pcs<br/><a href="#">RFQ</a></p>   |

