



CEL (California Eastern Laboratories)

### PS9601L

Part Number:	PS9601L
Manufacturer/Brand:	CEL (California Eastern Laboratories)
Product description:	OPTOISO 5KV OPEN DRAIN 8SMD GW
Datasheets:	<a href="#">1.PS9601L.pdf</a> <a href="#">2.PS9601L.pdf</a>
RoHs Status:	Contains lead / RoHS non-compliant
Ship From:	Hong Kong
Shipment Way:	DHL/Fedex/TNT/UPS/EMS

[REQUEST FOR QUOTATION](#)

#### Laboratories)

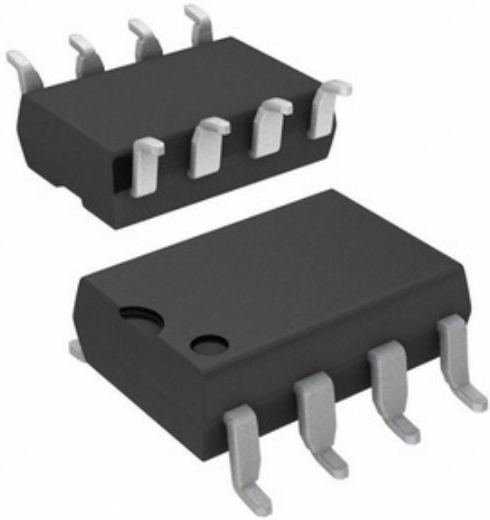


Image may be representation. See specifications for product details.

#### Specifications of PS9601L

PART NUMBER	PS9601L
MANUFACTURER	CEL (California Eastern Laboratories)
DESCRIPTION	OPTOISO 5KV OPEN DRAIN 8SMD GW
LEAD FREE STATUS / ROHS STATUS	Contains lead / RoHS non-compliant
DATA SHEET	<a href="#">1.PS9601L.pdf</a> <a href="#">2.PS9601L.pdf</a>
VOLTAGE - SUPPLY	4.5 V ~ 5.5 V
VOLTAGE - ISOLATION	5000Vrms
VOLTAGE - FORWARD (VF) (TYP)	1.65V
SUPPLIER DEVICE PACKAGE	8-SMD Gull Wing
SERIES	-
RISE / FALL TIME (TYP)	20ns, 10ns
PROPAGATION DELAY TPLH / TPHL (MAX)	75ns, 75ns
PACKAGING	Bulk
PACKAGE / CASE	8-SMD, Gull Wing
OUTPUT TYPE	Open Collector
OTHER NAMES	PS9601LNEC
OPERATING TEMPERATURE	-40°C ~ 85°C
NUMBER OF CHANNELS	1
MOUNTING TYPE	Surface Mount
MOISTURE SENSITIVITY LEVEL (MSL)	1 (Unlimited)
LEAD FREE STATUS / ROHS STATUS	Contains lead / RoHS non-compliant
INPUTS - SIDE 1/SIDE 2	1/0
INPUT TYPE	DC
DETAILED DESCRIPTION	Logic Output Optoisolator Open Collector 5000Vrms 1 Channel 8-SMD Gull Wing
DATA RATE	-
CURRENT - OUTPUT / CHANNEL	50mA
CURRENT - DC FORWARD (IF) (MAX)	30mA
COMMON MODE TRANSIENT IMMUNITY (MIN)	-

#### Related Tags

CEL (California Eastern Laboratories) PS9601L	PS9601L Distributor	PS9601L Supplier
PS9601L Price	PS9601L Pictures	PS9601L Image
PS9601L PDF Datasheet	PS9601L Download Datasheet	PS9601L Datasheet
PS9601L Stock	Buy PS9601L	Buy CEL (California Eastern Laboratories) PS9601L
CEL (California Eastern Laboratories) PS9601L	CEL (California Eastern Laboratories) Supplier	CEL (California Eastern Laboratories) Distributor
CEL (California Eastern Laboratories) PS9601L	California Eastern Labs PS9601L	California Eastern Laboratories PS9601L
CEL PS9601L	CEL (California Eastern Laboratories) PS9601L	

#### Related Products

<p><b>PS9613L-A</b> Manufacturers: CEL (California Eastern Laboratories) Description: OPTOISO 5KV OPEN COLL 8SMD GW In stock: Out stock <a href="#">RFQ</a></p>	<p><b>PS9613L</b> Manufacturers: CEL (California Eastern Laboratories) Description: OPTOISO 5KV OPEN COLL 8SMD GW In stock: Out stock <a href="#">RFQ</a></p>
<p><b>PS9613L-E3-A</b> Manufacturers: CEL (California Eastern Laboratories) Description: OPTOISO 5KV OPEN COLL 8SMD GW In stock: Out stock <a href="#">RFQ</a></p>	<p><b>PS9613-A</b> Manufacturers: CEL (California Eastern Laboratories) Description: OPTOISO 5KV OPEN COLLECTOR 8DIP In stock: Out stock <a href="#">RFQ</a></p>
<p><b>PS9613</b> Manufacturers: CEL (California Eastern Laboratories) Description: OPTOISO 5KV OPEN COLLECTOR 8DIP In stock: Out stock <a href="#">RFQ</a></p>	<p><b>PS9601</b> Manufacturers: CEL (California Eastern Laboratories) Description: OPTOISO 5KV OPEN DRAIN 8DIP In stock: Out stock <a href="#">RFQ</a></p>
<p><b>PS9587L3-E3-AX</b> Manufacturers: CEL (California Eastern Laboratories) Description: OPTOISO 5KV OPEN COLL 8DIP GW In stock: Out stock <a href="#">RFQ</a></p>	<p><b>PS9587L3-AX</b> Manufacturers: Renesas Electronics America Description: OPTOISO 5KV OPEN COLL 8DIP GW In stock: Out stock <a href="#">RFQ</a></p>
<p><b>PS9587L3-AX</b> Manufacturers: CEL (California Eastern Laboratories) Description: OPTOISO 5KV OPEN COLL 8DIP GW In stock: Out stock <a href="#">RFQ</a></p>	<p><b>PS9613L-E3</b> Manufacturers: CEL (California Eastern Laboratories) Description: OPTOISO 5KV OPEN COLL 8SMD GW In stock: Out stock <a href="#">RFQ</a></p>
<p><b>PS9587L2-V-E3-AX</b> Manufacturers: CEL (California Eastern Laboratories) Description: OPTOISO 5KV OPEN COLL 8DIP GW In stock: Out stock <a href="#">RFQ</a></p>	<p><b>PS9587L3-E3-AX</b> Manufacturers: Renesas Electronics America Description: OPTOISO 5KV OPEN COLL 8DIP GW In stock: Out stock <a href="#">RFQ</a></p>

