

Everlight Electronics

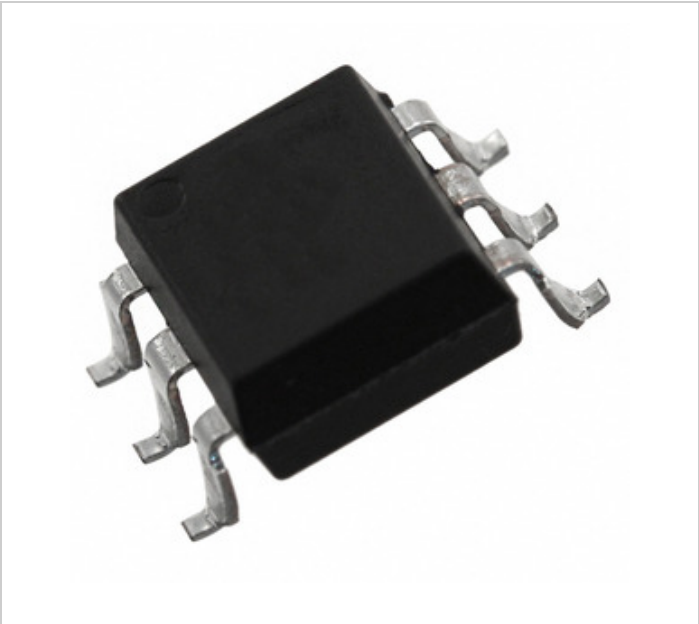





Image may be representation. See specifications for product details.

H11AA1S1(TA)

Part Number:	H11AA1S1(TA)
Manufacturer/Brand:	Everlight Electronics
Product description	OPTOISO 5KV TRANS W/BASE 6SMD
Datasheets:	 H11AA1S1(TA).pdf
RoHs Status	 Lead free / RoHS Compliant
Ship From	Hong Kong
Shipment Way	DHL/Fedex/TNT/UPS/EMS

REQUEST FOR QUOTATION

Specifications of H11AA1S1(TA)

PART NUMBER	H11AA1S1(TA)
MANUFACTURER	Everlight Electronics
DESCRIPTION	OPTOISO 5KV TRANS W/BASE 6SMD
LEAD FREE STATUS / ROHS STATUS	Lead free / RoHS Compliant
DATA SHEET	 H11AA1S1(TA).pdf
VOLTAGE - OUTPUT (MAX)	80V
VOLTAGE - ISOLATION	5000Vrms
VOLTAGE - FORWARD (VF) (TYP)	1.2V
VCE SATURATION (MAX)	400mV
TURN ON / TURN OFF TIME (TYP)	10μs, 10μs (Max)
SUPPLIER DEVICE PACKAGE	6-SMD
SERIES	-
RISE / FALL TIME (TYP)	10μs, 10μs (Max)
PACKAGING	Tape & Reel (TR)
PACKAGE / CASE	6-SMD, Gull Wing
OUTPUT TYPE	Transistor with Base
OPERATING TEMPERATURE	-55°C ~ 100°C
NUMBER OF CHANNELS	1
MOUNTING TYPE	Surface Mount
MOISTURE SENSITIVITY LEVEL (MSL)	1 (Unlimited)
MANUFACTURER STANDARD LEAD TIME	20 Weeks
LEAD FREE STATUS / ROHS STATUS	Lead free / RoHS Compliant
INPUT TYPE	AC, DC
DETAILED DESCRIPTION	Optoisolator Transistor with Base Output 5000Vrms 1 Channel 6-SMD
CURRENT TRANSFER RATIO (MIN)	20% @ 10mA
CURRENT TRANSFER RATIO (MAX)	-
CURRENT - OUTPUT / CHANNEL	-
CURRENT - DC FORWARD (IF) (MAX)	60mA

Related Tags

Everlight Electronics H11AA1S1(TA)	H11AA1S1(TA) Distributor	H11AA1S1(TA) Supplier
H11AA1S1(TA) Price	H11AA1S1(TA) Pictures	H11AA1S1(TA) Image
H11AA1S1(TA) PDF Datasheet	H11AA1S1(TA) Download Datasheet	H11AA1S1(TA) Datasheet
H11AA1S1(TA) Stock	Buy H11AA1S1(TA)	Buy Everlight Electronics H11AA1S1(TA)
Everlight Electronics H11AA1S1(TA)	Everlight Electronics Supplier	Everlight Electronics Distributor
Everlight Electronics H11AA1S1(TA)	Everlight Electronics Co Ltd H11AA1S1(TA)	

Related Products

 <div>H11AA1SR2M Manufacturers: AMI Semiconductor / ON Semiconductor Description: OPTOISO 4.17KV TRANS W/BASE 6SMD In stock: Out stock <div>RFQ</div></div>	 <div>H11AA1S(TA)-V Manufacturers: Everlight Electronics Description: OPTOISO 5KV TRANS W/BASE 6SMD In stock: Out stock <div>RFQ</div></div>
 <div>H11AA1M Manufacturers: Everlight Electronics Description: OPTOISO 5KV TRANS W/BASE 6DIP In stock: Out stock <div>RFQ</div></div>	 <div>H11AA1SD Manufacturers: AMI Semiconductor / ON Semiconductor Description: OPTOISO 5.3KV TRANS W/BASE 6SMD In stock: Out stock <div>RFQ</div></div>
 <div>H11AA1S1(TB) Manufacturers: Everlight Electronics Description: OPTOISO 5KV TRANS W/BASE 6SMD In stock: Out stock <div>RFQ</div></div>	 <div>H11AA1S Manufacturers: AMI Semiconductor / ON Semiconductor Description: OPTOISO 5.3KV TRANS W/BASE 6SMD In stock: Out stock <div>RFQ</div></div>
 <div>H11AA1S1(TA)-V Manufacturers: Everlight Electronics Description: OPTOISO 5KV TRANS W/BASE 6SMD In stock: Out stock <div>RFQ</div></div>	 <div>H11AA1S(TB) Manufacturers: Everlight Electronics Description: OPTOISO 5KV TRANS W/BASE 6SMD In stock: Out stock <div>RFQ</div></div>
 <div>H11AA1SM Manufacturers: AMI Semiconductor / ON Semiconductor Description: OPTOISO 4.17KV TRANS W/BASE 6SMD In stock: Out stock <div>RFQ</div></div>	 <div>H11AA1S(TA) Manufacturers: Everlight Electronics Description: OPTOISO 5KV TRANS W/BASE 6SMD In stock: Out stock <div>RFQ</div></div>
 <div>H11AA1S1(TB)-V Manufacturers: Everlight Electronics Description: OPTOISO 5KV TRANS W/BASE 6SMD In stock: Out stock <div>RFQ</div></div>	 <div>H11AA1S(TB)-V Manufacturers: Everlight Electronics Description: OPTOISO 5KV TRANS W/BASE 6SMD In stock: Out stock <div>RFQ</div></div>