

ON Semiconductor **AMI Semiconductor / ON**

## NCP302LSN40T1

Part Number:	NCP302LSN40T1
Manufacturer/Brand:	AMI Semiconductor / ON Semiconductor
Product description:	IC DETECTOR VOLTAGE 4.0V 5TSOP
Datasheets:	<a href="#">NCP302LSN40T1.pdf</a>
RoHS Status:	Contains lead / RoHS non-compliant
Ship From:	Hong Kong
Shipment Way:	DHL/Fedex/TNT/UPS/EMS

### Semiconductor

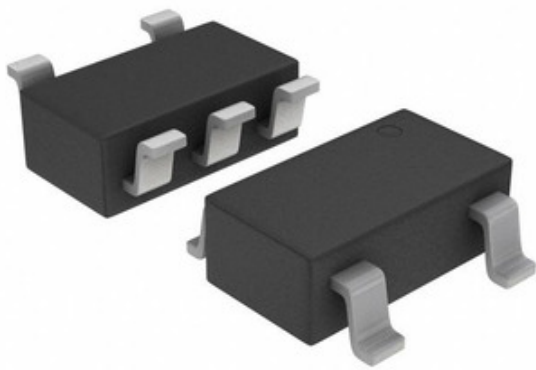


Image may be representation. See specifications for product details.

[REQUEST FOR QUOTATION](#)

### Specifications of NCP302LSN40T1

PART NUMBER	NCP302LSN40T1
MANUFACTURER	AMI Semiconductor / ON Semiconductor
DESCRIPTION	IC DETECTOR VOLTAGE 4.0V 5TSOP
LEAD FREE STATUS / ROHS STATUS	Contains lead / RoHS non-compliant
DATA SHEET	<a href="#">NCP302LSN40T1.pdf</a>
VOLTAGE - THRESHOLD	4V
TYPE	Simple Reset/Power-On Reset
SUPPLIER DEVICE PACKAGE	5-TSOP
SERIES	-
RESET TIMEOUT	Adjustable/Selectable
RESET	Active Low
PACKAGING	Tape & Reel (TR)
PACKAGE / CASE	SOT-23-5 Thin, TSOT-23-5
OUTPUT	Push-Pull, Totem Pole
OTHER NAMES	NCP302LSN40T1OS
OPERATING TEMPERATURE	-40°C ~ 125°C (TA)
NUMBER OF VOLTAGES MONITORED	1
MOUNTING TYPE	Surface Mount
MOISTURE SENSITIVITY LEVEL (MSL)	1 (Unlimited)
LEAD FREE STATUS / ROHS STATUS	Contains lead / RoHS non-compliant
DETAILED DESCRIPTION	Supervisor Push-Pull, Totem Pole 1 Channel 5-TSOP
BASE PART NUMBER	NCP302

### Related Tags

AMI Semiconductor / ON Semiconductor NCP302LSN40T1	NCP302LSN40T1 Distributor	NCP302LSN40T1 Supplier
NCP302LSN40T1 Price	NCP302LSN40T1 Pictures	NCP302LSN40T1 Image
NCP302LSN40T1 PDF Datasheet	NCP302LSN40T1 Download Datasheet	NCP302LSN40T1 Datasheet
NCP302LSN40T1 Stock	Buy NCP302LSN40T1	Buy AMI Semiconductor / ON Semiconductor NCP302LSN40T1
AMI Semiconductor / ON Semiconductor NCP302LSN40T1	AMI Semiconductor / ON Semiconductor Supplier	AMI Semiconductor / ON Semiconductor Distributor
AMI Semiconductor / ON Semiconductor NCP302LSN40T1	ON Semiconductor NCP302LSN40T1	Aptina / ON Semiconductor NCP302LSN40T1
Catalyst Semiconductor / ON Semiconductor NCP302LSN40T1	PulseCore Semiconductor / ON Semiconductor NCP302LSN40T1	Sanyo Semiconductor / ON Semiconductor NCP302LSN40T1

### Related Products

<p><b>NCP302LSN43T1G</b> Manufacturers: AMI Semiconductor / ON Semiconductor Description: IC DETECTOR VOLTAGE 4.3V 5TSOP In stock: Out stock <a href="#">RFQ</a></p>	<p><b>NCP302LSN30T1</b> Manufacturers: AMI Semiconductor / ON Semiconductor Description: IC VOLT DETECT CMOS 3.0V 5TSOP In stock: Out stock <a href="#">RFQ</a></p>
<p><b>NCP302LSN43T1</b> Manufacturers: AMI Semiconductor / ON Semiconductor Description: IC DETECTOR VOLTAGE 4.3V 5TSOP In stock: Out stock <a href="#">RFQ</a></p>	<p><b>NCP302LSN45T1</b> Manufacturers: AMI Semiconductor / ON Semiconductor Description: IC VOLT DETECT CMOS 4.5V 5TSOP In stock: Out stock <a href="#">RFQ</a></p>
<p><b>NCP302LSN40T1G</b> Manufacturers: AMI Semiconductor / ON Semiconductor Description: IC DETECTOR VOLTAGE 4.0V 5TSOP In stock: Out stock <a href="#">RFQ</a></p>	<p><b>NCP302LSN38T1</b> Manufacturers: AMI Semiconductor / ON Semiconductor Description: IC DETECTOR VOLTAGE 3.8V 5TSOP In stock: Out stock <a href="#">RFQ</a></p>
<p><b>NCP302LSN47T1</b> Manufacturers: AMI Semiconductor / ON Semiconductor Description: IC VOLT DETECT CMOS 4.7V 5TSOP In stock: Out stock <a href="#">RFQ</a></p>	<p><b>NCP302LSN45T1G</b> Manufacturers: AMI Semiconductor / ON Semiconductor Description: IC VOLT DETECT CMOS 4.5V 5TSOP In stock: Out stock <a href="#">RFQ</a></p>
<p><b>NCP302LSN38T1G</b> Manufacturers: AMI Semiconductor / ON Semiconductor Description: IC DETECTOR VOLTAGE 3.8V 5TSOP In stock: Out stock <a href="#">RFQ</a></p>	<p><b>NCP302LSN30T1G</b> Manufacturers: AMI Semiconductor / ON Semiconductor Description: IC VOLTAGE DETECT 3.0V 5TSOP In stock: Out stock <a href="#">RFQ</a></p>
<p><b>NCP302LSN33T1G</b> Manufacturers: AMI Semiconductor / ON Semiconductor Description: IC DETECTOR VOLTAGE 3.3V 5TSOP In stock: Out stock <a href="#">RFQ</a></p>	<p><b>NCP302LSN33T1</b> Manufacturers: AMI Semiconductor / ON Semiconductor Description: IC DETECTOR VOLTAGE 3.3V 5TSOP In stock: Out stock <a href="#">RFQ</a></p>