



ADI (Analog Devices, Inc.)

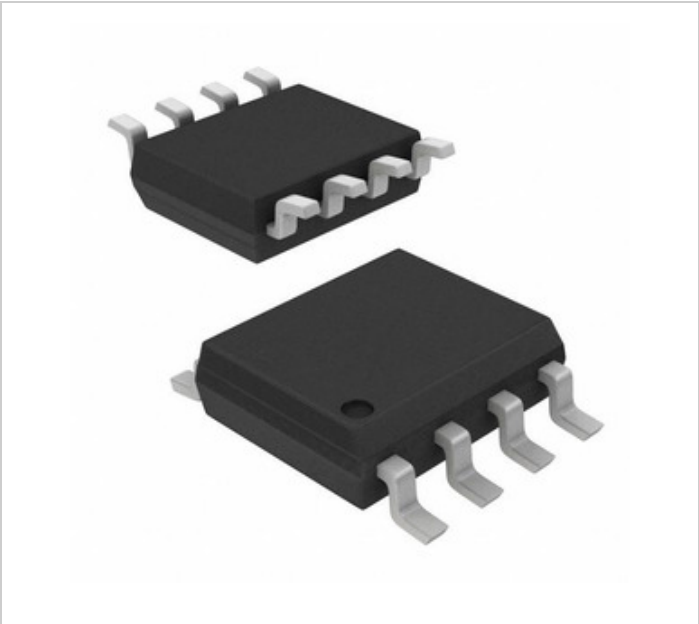





Image may be representation. See specifications for product details.

ADUM1250WSRZ

Part Number:	ADUM1250WSRZ
Manufacturer/Brand:	ADI (Analog Devices, Inc.)
Product description	DGTL ISO 2.5KV 2CH I2C 8SOIC
Datasheets:	 ADUM1250WSRZ.pdf
RoHs Status	 Lead free / RoHS Compliant
Ship From	Hong Kong
Shipment Way	DHL/Fedex/TNT/UPS/EMS

REQUEST FOR QUOTATION

Specifications of ADUM1250WSRZ

PART NUMBER	ADUM1250WSRZ
MANUFACTURER	ADI (Analog Devices, Inc.)
DESCRIPTION	DGTL ISO 2.5KV 2CH I2C 8SOIC
LEAD FREE STATUS / ROHS STATUS	Lead free / RoHS Compliant
DATA SHEET	 ADUM1250WSRZ.pdf
VOLTAGE - SUPPLY	3 V ~ 5.5 V
VOLTAGE - ISOLATION	2500Vrms
TYPE	I <sup>2</sup> C
TECHNOLOGY	Magnetic Coupling
SUPPLIER DEVICE PACKAGE	8-SOIC
SERIES	Automotive
RISE / FALL TIME (TYP)	26ns, 52ns
PULSE WIDTH DISTORTION (MAX)	145ns, 85ns
PROPAGATION DELAY TPLH / TPHL (MAX)	-
PACKAGING	Tube
PACKAGE / CASE	8-SOIC (0.154", 3.90mm Width)
OTHER NAMES	Q9126082
OPERATING TEMPERATURE	-40°C ~ 125°C
NUMBER OF CHANNELS	2
MOUNTING TYPE	Surface Mount
MOISTURE SENSITIVITY LEVEL (MSL)	3 (168 Hours)
MANUFACTURER STANDARD LEAD TIME	9 Weeks
LEAD FREE STATUS / ROHS STATUS	Lead free / RoHS Compliant
ISOLATED POWER	No
INPUTS - SIDE 1/SIDE 2	2/2
DETAILED DESCRIPTION	I <sup>2</sup> C Digital Isolator 2500Vrms 2 Channel 1Mbps 25kV/μs CMTI 8-SOIC (0.154", 3.90mm Width)
DATA RATE	1Mbps
COMMON MODE TRANSIENT IMMUNITY (MIN)	25kV/μs
CHANNEL TYPE	Bidirectional
BASE PART NUMBER	ADUM1250

Related Tags

ADI (Analog Devices, Inc.) ADUM1250WSRZ	ADUM1250WSRZ Distributor	ADUM1250WSRZ Supplier
ADUM1250WSRZ Price	ADUM1250WSRZ Pictures	ADUM1250WSRZ Image
ADUM1250WSRZ PDF Datasheet	ADUM1250WSRZ Download Datasheet	ADUM1250WSRZ Datasheet
ADUM1250WSRZ Stock	Buy ADUM1250WSRZ	Buy ADI (Analog Devices, Inc.) ADUM1250WSRZ
ADI (Analog Devices, Inc.) ADUM1250WSRZ	ADI (Analog Devices, Inc.) Supplier	ADI (Analog Devices, Inc.) Distributor
ADI (Analog Devices, Inc.) ADUM1250WSRZ	AD ADUM1250WSRZ	ADI (Analog Devices, Inc.) ADUM1250WSRZ
Analog Devices Inc. ADUM1250WSRZ	Analog Devices, Inc. ADUM1250WSRZ	

Related Products

 <div><b>ADUM1250WSRZ-RL7</b> Manufacturers: ADI (Analog Devices, Inc.) Description: IC DGTL ISO 4CH I2C 1MBPS 8SOIC In stock: Out stock <div>RFQ</div></div>	 <div><b>ADUM1251WARZ-RL7</b> Manufacturers: ADI (Analog Devices, Inc.) Description: IC DGTL ISO 3CH I2C 1MBPS 8SOIC In stock: Out stock <div>RFQ</div></div>
 <div><b>ADUM1250WARZ</b> Manufacturers: ADI (Analog Devices, Inc.) Description: DIGITAL ISOLATOR 8SOIC In stock: Out stock <div>RFQ</div></div>	 <div><b>ADUM1280ARZ</b> Manufacturers: ADI (Analog Devices, Inc.) Description: DGTL ISO 3KV 2CH GEN PURP 8SOIC In stock: Out stock <div>RFQ</div></div>
 <div><b>ADUM1250SRZ-RL7</b> Manufacturers: ADI (Analog Devices, Inc.) Description: DGTL ISO 2.5KV 2CH I2C 8SOIC In stock: Out stock <div>RFQ</div></div>	 <div><b>ADUM1251WARZ</b> Manufacturers: ADI (Analog Devices, Inc.) Description: IC DGTL ISO 3CH I2C 1MBPS 8SOIC In stock: 120 pcs <div>RFQ</div></div>
 <div><b>ADUM1250ARZ</b> Manufacturers: ADI (Analog Devices, Inc.) Description: DGTL ISO 2.5KV 2CH I2C 8SOIC In stock: Out stock <div>RFQ</div></div>	 <div><b>ADUM1251ARZ-RL7</b> Manufacturers: ADI (Analog Devices, Inc.) Description: DGTL ISO 2.5KV 2CH I2C 8SOIC In stock: Out stock <div>RFQ</div></div>
 <div><b>ADUM1250ARZ-RL7</b> Manufacturers: ADI (Analog Devices, Inc.) Description: DGTL ISO 2.5KV 2CH I2C 8SOIC In stock: Out stock <div>RFQ</div></div>	 <div><b>ADUM1250SRZ</b> Manufacturers: ADI (Analog Devices, Inc.) Description: DGTL ISO 2.5KV 2CH I2C 8SOIC In stock: Out stock <div>RFQ</div></div>
 <div><b>ADUM1250WARZ-RL7</b> Manufacturers: ADI (Analog Devices, Inc.) Description: DIGITAL ISOLATOR 8SOIC In stock: Out stock <div>RFQ</div></div>	 <div><b>ADUM1251ARZ</b> Manufacturers: ADI (Analog Devices, Inc.) Description: DGTL ISO 2.5KV 2CH I2C 8SOIC In stock: 195 pcs <div>RFQ</div></div>