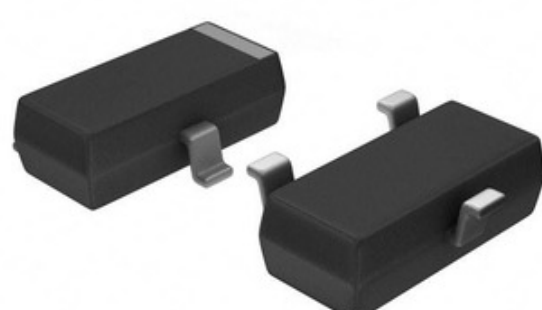


Panasonic

Panasonic

MN13822JP

Part Number: MN13822JP
 Manufacturer/Brand: Panasonic
 Product description: IC VOLT DETECT 2.6V INV CMOS SMD
 Datasheets: [PDF MN13822JP.pdf](#)
 RoHs Status: Contains lead / RoHS non-compliant
 Ship From: Hong Kong
 Shipment Way: DHL/Fedex/TNT/UPS/EMS



[REQUEST FOR QUOTATION](#)

Image may be representation. See specifications for product details.

Specifications of MN13822JP

PART NUMBER	MN13822JP
MANUFACTURER	Panasonic
DESCRIPTION	IC VOLT DETECT 2.6V INV CMOS SMD
LEAD FREE STATUS / ROHS STATUS	Contains lead / RoHS non-compliant
DATA SHEET	PDF MN13822JP.pdf
VOLTAGE - THRESHOLD	2.6V
TYPE	Simple Reset/Power-On Reset
SUPPLIER DEVICE PACKAGE	Mini 3P
SERIES	-
RESET TIMEOUT	3 μ s Typical
RESET	Active Low
PACKAGING	Cut Tape (CT)
PACKAGE / CASE	TO-236-3, SC-59, SOT-23-3
OUTPUT	CMOS Inverted
OTHER NAMES	MN13822-J MN13822-JCT MN13822-JCT-ND MN13822JPCT
OPERATING TEMPERATURE	-20°C ~ 70°C (TA)
NUMBER OF VOLTAGES MONITORED	1
MOUNTING TYPE	Surface Mount
MOISTURE SENSITIVITY LEVEL (MSL)	1 (Unlimited)
LEAD FREE STATUS / ROHS STATUS	Contains lead / RoHS non-compliant
DETAILED DESCRIPTION	Supervisor CMOS Inverted 1 Channel Mini 3P
BASE PART NUMBER	MN138*

Related Tags

Panasonic MN13822JP	MN13822JP Distributor	MN13822JP Supplier
MN13822JP Price	MN13822JP Pictures	MN13822JP Image
MN13822JP PDF Datasheet	MN13822JP Download Datasheet	MN13822JP Datasheet
MN13822JP Stock	Buy MN13822JP	Buy Panasonic MN13822JP
Panasonic MN13822JP	Panasonic Supplier	Panasonic Distributor
Panasonic MN13822JP	Panasonic - Consumer Division MN13822JP	Panasonic - Consumer Electronics Corp. MN13822JP
Panasonic Battery Group MN13822JP	Panasonic Electric Works - ACSD MN13822JP	Panasonic Electronic Components - Semiconductor Pr MN13822JP
Panasonic - ATG MN13822JP	Panasonic - BSG MN13822JP	Panasonic - DTG MN13822JP
Panasonic Electric Works MN13822JP	Panasonic Electronic Components MN13822JP	Panasonic Industrial Automation Sales MN13822JP
Panasonic Semiconductor MN13822JP		

Related Products

 MN13822MP Manufacturers: Panasonic Description: IC VOLT DETECT 3.2V INV CMOS SMD In stock: Out stock RFQ	 MN13822HP Manufacturers: Panasonic Description: IC VOLT DETECT 2.5V INV CMOS SMD In stock: Out stock RFQ
 MN13822EP Manufacturers: Panasonic Description: IC VOLT DETECT 2.2V INV CMOS SMD In stock: Out stock RFQ	 MN13822DP Manufacturers: Panasonic Description: IC VOLT DETECT 2.1V INV CMOS SMD In stock: Out stock RFQ
 MN13822LP Manufacturers: Panasonic Description: IC VOLT DETECT 3.0V INV CMOS SMD In stock: Out stock RFQ	 MN13822PP Manufacturers: Panasonic Description: IC VOLT DETECT 3.8V INV CMOS SMD In stock: Out stock RFQ
 MN13822CP Manufacturers: Panasonic Description: IC VOLT DETECT 2.0V INV CMOS SMD In stock: Out stock RFQ	 MN13822QP Manufacturers: Panasonic Description: IC VOLT DETECT 3.8V INV CMOS SMD In stock: Out stock RFQ
 MN13822GP Manufacturers: Panasonic Description: IC VOLT DETECT 2.4V INV CMOS SMD In stock: Out stock RFQ	 MN13822FP Manufacturers: Panasonic Description: IC VOLT DETECT 2.3V INV CMOS SMD In stock: Out stock RFQ
 MN13822NP Manufacturers: Panasonic Description: IC VOLT DETECT 3.4V INV CMOS SMD In stock: Out stock RFQ	 MN13822KP Manufacturers: Panasonic Description: IC VOLT DETECT 2.8V INV CMOS SMD In stock: Out stock RFQ