

**AMI Semiconductor / ON**

## FAN7080CM\_F085

Part Number:	FAN7080CM_F085
Manufacturer/Brand:	AMI Semiconductor / ON Semiconductor
Product description:	IC GATE DRIVER HALF BRIDGE 8SOIC
Datasheets:	FAN7080CM_F085.pdf
RoHs Status:	Lead free / RoHS Compliant
Ship From:	Hong Kong
Shipment Way:	DHL/Fedex/TNT/UPS/EMS

### Semiconductor

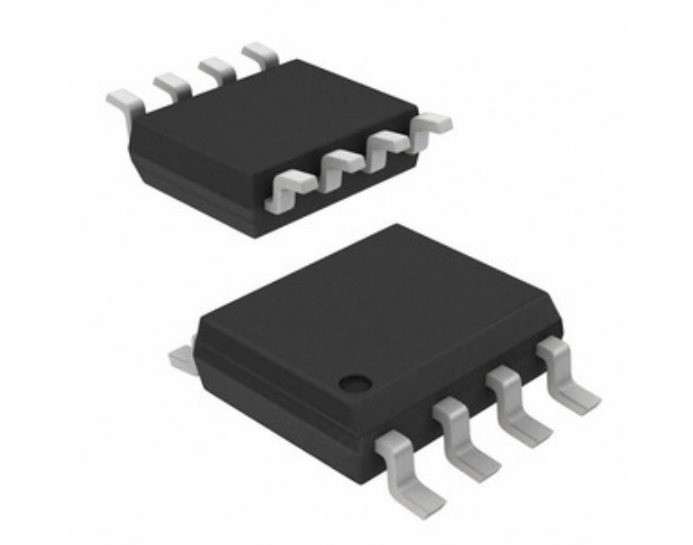


Image may be representation. See specifications for product details.

[REQUEST FOR QUOTATION](#)

### Specifications of FAN7080CM\_F085

PART NUMBER	FAN7080CM_F085
MANUFACTURER	AMI Semiconductor / ON Semiconductor
DESCRIPTION	IC GATE DRIVER HALF BRIDGE 8SOIC
LEAD FREE STATUS / ROHS STATUS	Lead free / RoHS Compliant
DATA SHEET	FAN7080CM_F085.pdf
VOLTAGE - SUPPLY	5.5 V ~ 20 V
SUPPLIER DEVICE PACKAGE	8-SOIC
SERIES	Automotive, AEC-Q100
RISE / FALL TIME (TYP)	40ns, 25ns
PACKAGING	Tube
PACKAGE / CASE	8-SOIC (0.154", 3.90mm Width)
OPERATING TEMPERATURE	-40°C ~ 150°C (TJ)
NUMBER OF DRIVERS	2
MOUNTING TYPE	Surface Mount
MOISTURE SENSITIVITY LEVEL (MSL)	1 (Unlimited)
LOGIC VOLTAGE - VIL, VIH	0.8V, 2.7V
LEAD FREE STATUS / ROHS STATUS	Lead free / RoHS Compliant
INPUT TYPE	Non-Inverting
HIGH SIDE VOLTAGE - MAX (BOOTSTRAP)	600V
GATE TYPE	IGBT, N-Channel MOSFET
DRIVEN CONFIGURATION	Half-Bridge
DETAILED DESCRIPTION	Half-Bridge Gate Driver IC Non-Inverting 8-SOIC
CURRENT - PEAK OUTPUT (SOURCE, SINK)	300mA, 600mA
CHANNEL TYPE	Synchronous
BASE PART NUMBER	FAN7080

### Related Tags

AMI Semiconductor / ON Semiconductor FAN7080CM_F085	FAN7080CM_F085 Distributor	FAN7080CM_F085 Supplier
FAN7080CM_F085 Price	FAN7080CM_F085 Pictures	FAN7080CM_F085 Image
FAN7080CM_F085 PDF Datasheet	FAN7080CM_F085 Download Datasheet	FAN7080CM_F085 Datasheet
FAN7080CM_F085 Stock	Buy FAN7080CM_F085	Buy AMI Semiconductor / ON Semiconductor FAN7080CM_F085
AMI Semiconductor / ON Semiconductor FAN7080CM_F085	AMI Semiconductor / ON Semiconductor Supplier	AMI Semiconductor / ON Semiconductor Distributor
AMI Semiconductor / ON Semiconductor FAN7080CM_F085	ON Semiconductor FAN7080CM_F085	Aptina / ON Semiconductor FAN7080CM_F085
Catalyst Semiconductor / ON Semiconductor FAN7080CM_F085	PulseCore Semiconductor / ON Semiconductor FAN7080CM_F085	Sanyo Semiconductor / ON Semiconductor FAN7080CM_F085

### Related Products

<p><b>FAN7040M</b> Manufacturers: AMI Semiconductor / ON Semiconductor Description: IC AMP AUDIO PWR 3.5W AB 20SOIC In stock: Out stock <a href="#">RFQ</a></p>	<p><b>FAN7081M-GF085</b> Manufacturers: AMI Semiconductor / ON Semiconductor Description: IC GATE DRIVER HI SIDE 8-SOIC In stock: Out stock <a href="#">RFQ</a></p>
<p><b>FAN7040MX</b> Manufacturers: AMI Semiconductor / ON Semiconductor Description: IC AMP AUDIO PWR 3.5W AB 20SOIC In stock: Out stock <a href="#">RFQ</a></p>	<p><b>FAN7080CMX_F085</b> Manufacturers: AMI Semiconductor / ON Semiconductor Description: IC GATE DRIVER HALF BRIDGE 8SOIC In stock: Out stock <a href="#">RFQ</a></p>
<p><b>FAN7080MX-GF085</b> Manufacturers: AMI Semiconductor / ON Semiconductor Description: IC GATE DRIVER HALF BRIDGE 8SOIC In stock: Out stock <a href="#">RFQ</a></p>	<p><b>FAN7081CM_F085</b> Manufacturers: AMI Semiconductor / ON Semiconductor Description: IC GATE DRIVER HI SIDE 8-SOIC In stock: Out stock <a href="#">RFQ</a></p>
<p> <b>FAN7071TS</b> Manufacturers: AMI Semiconductor / ON Semiconductor Description: IC LANDING CORRECTION 10SIPHD In stock: Out stock <a href="#">RFQ</a></p>	<p><b>FAN6961SZ</b> Manufacturers: AMI Semiconductor / ON Semiconductor Description: IC PFC CONTROLLER DCM 8SOP In stock: Out stock <a href="#">RFQ</a></p>
<p><b>FAN7081CMX_F085</b> Manufacturers: AMI Semiconductor / ON Semiconductor Description: IC GATE DRIVER HIGH SIDE 8SOIC In stock: Out stock <a href="#">RFQ</a></p>	<p><b>FAN7080M-GF085</b> Manufacturers: AMI Semiconductor / ON Semiconductor Description: IC GATE DRIVER HALF BRIDGE 8SOIC In stock: Out stock <a href="#">RFQ</a></p>
<p><b>FAN6982MY</b> Manufacturers: AMI Semiconductor / ON Semiconductor Description: IC CTRL PFC CCM 14SOIC In stock: Out stock <a href="#">RFQ</a></p>	<p><b>FAN7081MX-GF085</b> Manufacturers: AMI Semiconductor / ON Semiconductor Description: IC GATE DRIVER HI SIDE 8-SOIC In stock: Out stock <a href="#">RFQ</a></p>