

SII SII Semiconductor Corporation

SII Semiconductor Corporation

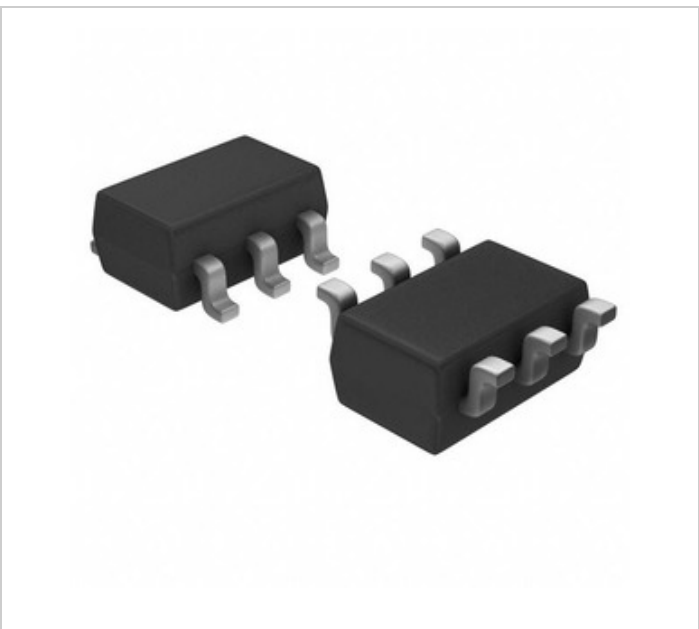


Image may be representation. See specifications for product details.

S-1721A1330-M6T1U

Part Number:	S-1721A1330-M6T1U
Manufacturer/Brand:	SII Semiconductor Corporation
Product description	IC REG LIN 1.3V/3V 150MA SOT23-6
Datasheets:	S-1721A1330-M6T1U.pdf
RoHs Status	Lead free / RoHS Compliant
Ship From	Hong Kong
Shipment Way	DHL/Fedex/TNT/UPS/EMS

REQUEST FOR QUOTATION

Specifications of S-1721A1330-M6T1U

PART NUMBER	S-1721A1330-M6T1U
MANUFACTURER	SII Semiconductor Corporation
DESCRIPTION	IC REG LIN 1.3V/3V 150MA SOT23-6
LEAD FREE STATUS / ROHS STATUS	Lead free / RoHS Compliant
DATA SHEET	S-1721A1330-M6T1U.pdf
VOLTAGE DROPOUT (MAX)	0.48V @ 100mA, 0.23V @ 100mA
VOLTAGE - OUTPUT (MIN/FIXED)	1.3V, 3V
VOLTAGE - OUTPUT (MAX)	-
VOLTAGE - INPUT (MAX)	6.5V
SUPPLIER DEVICE PACKAGE	SOT-23-6
SERIES	S-1721
PROTECTION FEATURES	Over Current
PACKAGING	Tape & Reel (TR)
PACKAGE / CASE	SOT-23-6
PSRR	80dB (1kHz), 75dB (1kHz)
OUTPUT TYPE	Fixed
OUTPUT CONFIGURATION	Positive
OPERATING TEMPERATURE	-40°C ~ 85°C (TA)
NUMBER OF REGULATORS	2
MOUNTING TYPE	Surface Mount
MOISTURE SENSITIVITY LEVEL (MSL)	1 (Unlimited)
MANUFACTURER STANDARD LEAD TIME	20 Weeks
LEAD FREE STATUS / ROHS STATUS	Lead free / RoHS Compliant
DETAILED DESCRIPTION	Linear Voltage Regulator IC Positive Fixed 2 Output 1.3V, 3V 150mA SOT-23-6
CURRENT - SUPPLY (MAX)	45µA
CURRENT - QUIESCENT (IQ)	1µA
CURRENT - OUTPUT	150mA
CONTROL FEATURES	Enable

Related Tags

SII Semiconductor Corporation S-1721A1330-M6T1U	S-1721A1330-M6T1U Distributor	S-1721A1330-M6T1U Supplier
S-1721A1330-M6T1U Price	S-1721A1330-M6T1U Pictures	S-1721A1330-M6T1U Image
S-1721A1330-M6T1U PDF Datasheet	S-1721A1330-M6T1U Download Datasheet	S-1721A1330-M6T1U Datasheet
S-1721A1330-M6T1U Stock	Buy S-1721A1330-M6T1U	Buy SII Semiconductor Corporation S-1721A1330-M6T1U
SII Semiconductor Corporation S-1721A1330-M6T1U	SII Semiconductor Corporation Supplier	SII Semiconductor Corporation Distributor
SII Semiconductor Corporation S-1721A1330-M6T1U		

Related Products

<p>S-1721A1328-M6T1G Manufacturers: SII Semiconductor Corporation Description: IC REG LIN 1.3V/2.8V 150MA SOT23 In stock: Out stock</p> <p>RFQ</p>	<p>S-1721A1328-M6T1U Manufacturers: SII Semiconductor Corporation Description: IC REG LIN 1.3V/2.8V 150MA SOT23 In stock: Out stock</p> <p>RFQ</p>
<p>S-1721A1528-M6T1G Manufacturers: SII Semiconductor Corporation Description: IC REG LIN 1.5V/2.8V 150MA SOT23 In stock: Out stock</p> <p>RFQ</p>	<p>S-1721A1512-I6T1U Manufacturers: SII Semiconductor Corporation Description: IC REG LIN 1.2V/1.5V 150MA SNT6A In stock: Out stock</p> <p>RFQ</p>
<p>S-1721A1518-I6T1U Manufacturers: SII Semiconductor Corporation Description: IC REG LIN 1.5V/1.8V 150MA SNT6A In stock: Out stock</p> <p>RFQ</p>	<p>S-1721A1233-I6T1U Manufacturers: SII Semiconductor Corporation Description: IC REG LIN 1.2V/3.3V 150MA SNT6A In stock: 100 pcs</p> <p>RFQ</p>
<p>S-1721A1525-I6T1U Manufacturers: SII Semiconductor Corporation Description: IC REG LIN 1.5V/2.5V 0.15A SNT6A In stock: 100 pcs</p> <p>RFQ</p>	<p>S-1721A1233-M6T1G Manufacturers: SII Semiconductor Corporation Description: IC REG LIN 1.2V/3.3V 150MA SOT23 In stock: Out stock</p> <p>RFQ</p>
<p>S-1721A1513-I6T1U Manufacturers: SII Semiconductor Corporation Description: IC REG LIN 1.3V/1.5V 150MA SNT6A In stock: Out stock</p> <p>RFQ</p>	<p>S-1721A1233-M6T1U Manufacturers: SII Semiconductor Corporation Description: IC REG LIN 1.2V/3.3V 150MA SOT23 In stock: Out stock</p> <p>RFQ</p>
<p>S-1721A1330-M6T1G Manufacturers: SII Semiconductor Corporation Description: IC REG LIN 1.3V/3V 150MA SOT23-6 In stock: Out stock</p> <p>RFQ</p>	<p>S-1721A1515-I6T1U Manufacturers: SII Semiconductor Corporation Description: IC REG LIN 1.5V/1.5V 150MA SNT6A In stock: Out stock</p> <p>RFQ</p>