



SII Semiconductor Corporation

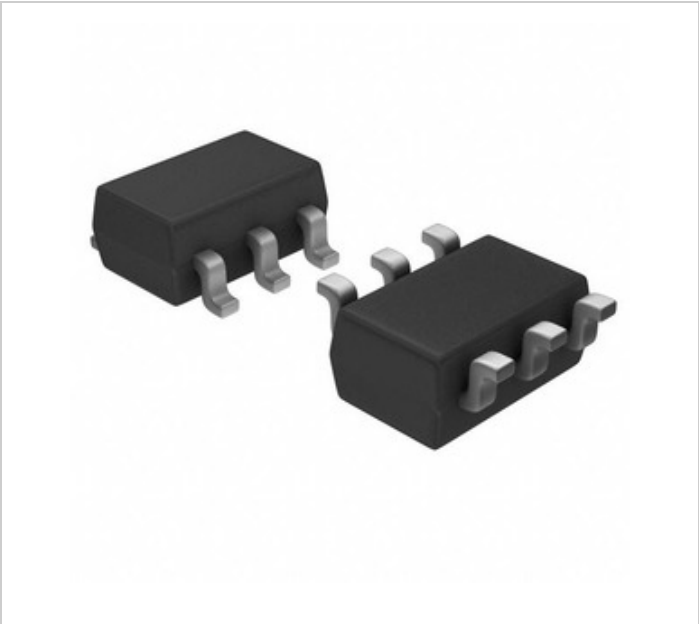





Image may be representation. See specifications for product details.

S-1711A1529-M6T1G

Part Number:	S-1711A1529-M6T1G
Manufacturer/Brand:	SII Semiconductor Corporation
Product description	IC REG LIN 1.5V/2.9V 150MA SOT23
Datasheets:	 S-1711A1529-M6T1G.pdf
RoHs Status	 Lead free / RoHS Compliant
Ship From	Hong Kong
Shipment Way	DHL/Fedex/TNT/UPS/EMS

REQUEST FOR QUOTATION

Specifications of S-1711A1529-M6T1G

PART NUMBER	S-1711A1529-M6T1G
MANUFACTURER	SII Semiconductor Corporation
DESCRIPTION	IC REG LIN 1.5V/2.9V 150MA SOT23
LEAD FREE STATUS / ROHS STATUS	Lead free / RoHS Compliant
DATA SHEET	 S-1711A1529-M6T1G.pdf
VOLTAGE DROPOUT (MAX)	0.58V @ 150mA, 0.35V @ 150mA
VOLTAGE - OUTPUT (MIN/FIXED)	1.5V, 2.9V
VOLTAGE - OUTPUT (MAX)	-
VOLTAGE - INPUT (MAX)	6.5V
SUPPLIER DEVICE PACKAGE	SOT-23-6
SERIES	S-1711
PROTECTION FEATURES	Over Current
PACKAGING	Tape & Reel (TR)
PACKAGE / CASE	SOT-23-6
PSRR	70dB (1kHz)
OUTPUT TYPE	Fixed
OUTPUT CONFIGURATION	Positive
OPERATING TEMPERATURE	-40°C ~ 85°C (TA)
NUMBER OF REGULATORS	2
MOUNTING TYPE	Surface Mount
MOISTURE SENSITIVITY LEVEL (MSL)	1 (Unlimited)
LEAD FREE STATUS / ROHS STATUS	Lead free / RoHS Compliant
DETAILED DESCRIPTION	Linear Voltage Regulator IC Positive Fixed 2 Output 1.5V, 2.9V 150mA SOT-23-6
CURRENT - SUPPLY (MAX)	90μA
CURRENT - QUIESCENT (IQ)	1μA
CURRENT - OUTPUT	150mA
CONTROL FEATURES	Enable

Related Tags

SII Semiconductor Corporation S-1711A1529-M6T1G	S-1711A1529-M6T1G Distributor	S-1711A1529-M6T1G Supplier
S-1711A1529-M6T1G Price	S-1711A1529-M6T1G Pictures	S-1711A1529-M6T1G Image
S-1711A1529-M6T1G PDF Datasheet	S-1711A1529-M6T1G Download Datasheet	S-1711A1529-M6T1G Datasheet
S-1711A1529-M6T1G Stock	Buy S-1711A1529-M6T1G	Buy SII Semiconductor Corporation S-1711A1529-M6T1G
SII Semiconductor Corporation S-1711A1529-M6T1G	SII Semiconductor Corporation Supplier	SII Semiconductor Corporation Distributor
SII Semiconductor Corporation S-1711A1529-M6T1G		

Related Products

 <div><b>S-1711A1528-M6T1U</b> Manufacturers: SII Semiconductor Corporation Description: IC REG LIN 1.5V/2.8V 150MA SOT23 In stock: Out stock <div>RFQ</div></div>	 <div><b>S-1711A1515-M6T1U</b> Manufacturers: SII Semiconductor Corporation Description: IC REG LIN 1.5V/1.5V 150MA SOT23 In stock: Out stock <div>RFQ</div></div>
 <div><b>S-1711A1815-I6T1U</b> Manufacturers: SII Semiconductor Corporation Description: IC REG LIN 1.5V/1.8V 150MA SNT6A In stock: Out stock <div>RFQ</div></div>	 <div><b>S-1711A1518-I6T1U</b> Manufacturers: SII Semiconductor Corporation Description: IC REG LIN 1.5V/1.8V 150MA SNT6A In stock: Out stock <div>RFQ</div></div>
 <div><b>S-1711A1533-M6T1U</b> Manufacturers: SII Semiconductor Corporation Description: IC REG LIN 1.5V/3.3V 150MA SOT23 In stock: Out stock <div>RFQ</div></div>	 <div><b>S-1711A1528-I6T1U</b> Manufacturers: SII Semiconductor Corporation Description: IC REG LIN 1.5V/2.8V 150MA SNT6A In stock: Out stock <div>RFQ</div></div>
 <div><b>S-1711A1815-M6T1G</b> Manufacturers: SII Semiconductor Corporation Description: IC REG LIN 1.5V/1.8V 150MA SOT23 In stock: Out stock <div>RFQ</div></div>	 <div><b>S-1711A1529-M6T1U</b> Manufacturers: SII Semiconductor Corporation Description: IC REG LIN 1.5V/2.9V 150MA SOT23 In stock: Out stock <div>RFQ</div></div>
 <div><b>S-1711A152J-I6T1U</b> Manufacturers: SII Semiconductor Corporation Description: IC REG LIN 1.5/2.85V 150MA SNT6A In stock: Out stock <div>RFQ</div></div>	 <div><b>S-1711A1528-M6T1G</b> Manufacturers: SII Semiconductor Corporation Description: IC REG LIN 1.5V/2.8V 150MA SOT23 In stock: Out stock <div>RFQ</div></div>
 <div><b>S-1711A1533-M6T1G</b> Manufacturers: SII Semiconductor Corporation Description: IC REG LIN 1.5V/3.3V 150MA SOT23 In stock: Out stock <div>RFQ</div></div>	 <div><b>S-1711A1526-I6T1U</b> Manufacturers: SII Semiconductor Corporation Description: IC REG LIN 1.5V/2.6V 150MA SNT6A In stock: Out stock <div>RFQ</div></div>