



International Rectifier (Infineon Technologies)

ITS5215LCUMA1

Part Number:	ITS5215LCUMA1
Manufacturer/Brand:	International Rectifier (Infineon Technologies)
Product description:	IC DUAL HIGH SIDE SWITCH DSO12
Datasheets:	PDF ITS5215LCUMA1.pdf
RoHS Status:	Lead free / RoHS Compliant
Ship From:	Hong Kong
Shipment Way:	DHL/Fedex/TNT/UPS/EMS

[REQUEST FOR QUOTATION](#)

Technologies

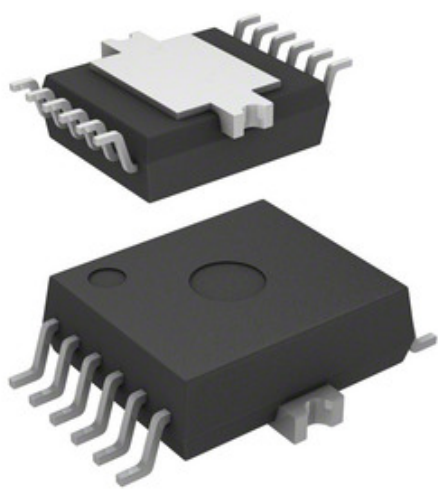


Image may be representation. See specifications for product details.

Specifications of ITS5215LCUMA1

PART NUMBER	ITS5215LCUMA1
MANUFACTURER	International Rectifier (Infineon Technologies)
DESCRIPTION	IC DUAL HIGH SIDE SWITCH DSO12
LEAD FREE STATUS / ROHS STATUS	Lead free / RoHS Compliant
DATA SHEET	PDF ITS5215LCUMA1.pdf
VOLTAGE - SUPPLY (VCC/VDD)	Not Required
VOLTAGE - LOAD	5.5 V ~ 40 V
SWITCH TYPE	General Purpose
SUPPLIER DEVICE PACKAGE	PG-DSO-12-9
SERIES	PROFET®
RDS ON (TYP)	70 mOhm
RATIO - INPUT:OUTPUT	1:1
PACKAGING	Tape & Reel (TR)
PACKAGE / CASE	12-BSOP (0.295", 7.50mm Width) Exposed Pad
OUTPUT TYPE	N-Channel
OUTPUT CONFIGURATION	High Side
OTHER NAMES	ITS5215L ITS5215LCUMA1TR ITS5215LTR ITS5215LTR-ND SP000219826
OPERATING TEMPERATURE	-30°C ~ 85°C (TA)
NUMBER OF OUTPUTS	2
MOISTURE SENSITIVITY LEVEL (MSL)	3 (168 Hours)
MANUFACTURER STANDARD LEAD TIME	16 Weeks
LEAD FREE STATUS / ROHS STATUS	Lead free / RoHS Compliant
INTERFACE	On/Off
INPUT TYPE	Non-Inverting
FEATURES	Status Flag
FAULT PROTECTION	Current Limiting (Fixed), Open Load Detect, Over Temperature, Over Voltage
CURRENT - OUTPUT (MAX)	3.7A
BASE PART NUMBER	ITS5215

Related Tags

International Rectifier (Infineon Technologies) ITS5215LCUMA1	ITS5215LCUMA1 Distributor	ITS5215LCUMA1 Supplier
ITS5215LCUMA1 Price	ITS5215LCUMA1 Pictures	ITS5215LCUMA1 Image
ITS5215LCUMA1 PDF Datasheet	ITS5215LCUMA1 Download Datasheet	ITS5215LCUMA1 Datasheet
ITS5215LCUMA1 Stock	Buy ITS5215LCUMA1	Buy International Rectifier (Infineon Technologies) ITS5215LCUMA1
International Rectifier (Infineon Technologies) ITS5215LCUMA1	International Rectifier (Infineon Technologies) Supplier	International Rectifier (Infineon Technologies) Distributor
International Rectifier (Infineon Technologies) ITS5215LCUMA1	International Rectifier ITS5215LCUMA1	Infineon Technologies ITS5215LCUMA1
International Rectifier (Infineon Technologies) ITS5215LCUMA1	IR (Infineon Technologies) ITS5215LCUMA1	

Related Products

<p>ITS50FV1ST Manufacturers: C&K Description: SWITCH TACTILE SPST-NO 0.05A 12V In stock: 530 pcs RFQ</p>	<p>ITS640S2HKSA1 Manufacturers: International Rectifier (Infineon Technologies) Description: IC SWITCH HISIDE SMART TO220-7 In stock: Out stock RFQ</p>
<p>ITS50FV3SR Manufacturers: C&K Description: SWITCH TACTILE SPST-NO 0.05A 12V In stock: Out stock RFQ</p>	<p>ITS50FR3SR Manufacturers: C&K Description: SWITCH TACTILE SPST-NO 0.05A 12V In stock: Out stock RFQ</p>
<p>ITS640S2SHKSA1 Manufacturers: International Rectifier (Infineon Technologies) Description: IC SWITCH HISIDE SMART TO220-7 In stock: Out stock RFQ</p>	<p>ITS621L1HKSA1 Manufacturers: International Rectifier (Infineon Technologies) Description: IC SWITCH HISIDE SMART TO220-7 In stock: Out stock RFQ</p>
<p>ITS50FR1ST Manufacturers: C&K Description: SWITCH TACTILE SPST-NO 0.05A 12V In stock: Out stock RFQ</p>	<p>ITS50FR2ST Manufacturers: C&K Description: SWITCH TACTILE SPST-NO 0.05A 12V In stock: 708 pcs RFQ</p>
<p>ITS612N1HKSA1 Manufacturers: International Rectifier (Infineon Technologies) Description: IC SWITCH HISIDE SMART TO220-7 In stock: Out stock RFQ</p>	<p>ITS612N1E3230HKSA1 Manufacturers: International Rectifier (Infineon Technologies) Description: IC SWITCH HISIDE SMART TO220-7 In stock: Out stock RFQ</p>
<p>ITS621L1E3220HKSA1 Manufacturers: International Rectifier (Infineon Technologies) Description: IC SWITCH HISIDE SMART TO220-7 In stock: Out stock RFQ</p>	<p>ITS50FV2SR Manufacturers: C&K Description: SWITCH TACTILE SPST-NO 0.05A 12V In stock: Out stock RFQ</p>



