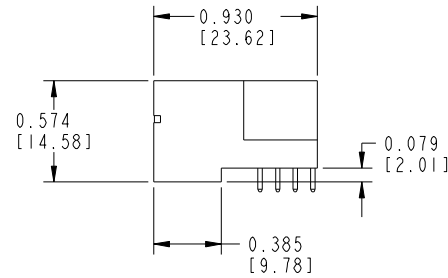
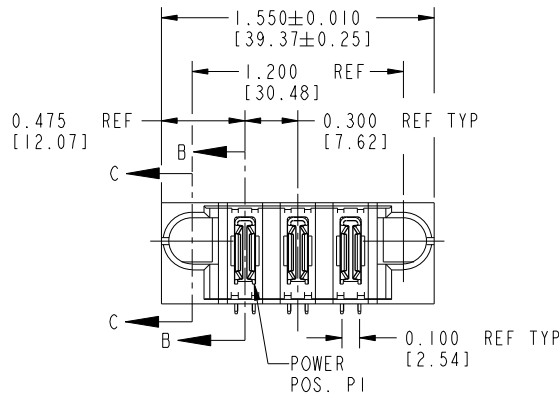
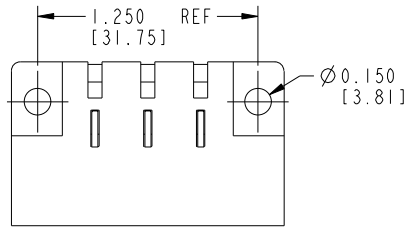


Tous droits strictement reserves. Reproduction ou communication a des tiers interdite sous quelque forme que ce soit sans autorisation écrite du propriétaire. Propriete de c FCI. Droits de reproduction FCI.



All rights strictly reserved. Reproduction or issue to third parties in any form whatever is not permitted without written authority from the proprietor. Property of FCI. Copyright FCI.

PRODUCT No.	ROWS	POWER				
		E1	P1	P2	P3	E2
51812-001	D C B A					
Note: ①						



CODE	CONTACT TYPE
PA	POWER

mal'1 code				NOTE 1		tolerances unless otherwise specified		CUSTOMER COPY		FCI www.fciconnect.com	
ltr	ecn no.	dr	date	linear	.XX±.01/0.X±0.3	projection	title 3ACP RIGHT ANGLE SOLDER HEADER				
A	V12104	JWS	7/23/01		.XXX±.005/0.XX±0.13		product family PwrBlade code 213				
B	DG05-0125	GuoJM	05/20/05	angles	.XXX±.0020/0.XXX±0.051	INCH/MM	size	dwg no	sheet		
C	DG07-0396	SH	10/08/07		0°±2°	scale 1:1	A	51812-001	1 OF 2		
				dr	J. SHAFFER 7/23/01						
				enr	E. TREECE 7/23/01						
				chr	E. TREECE 7/23/01						
				appd	E. TREECE 7/23/01						
sheet index	revision sheet	C	C								
		1	2								

cage code 22526

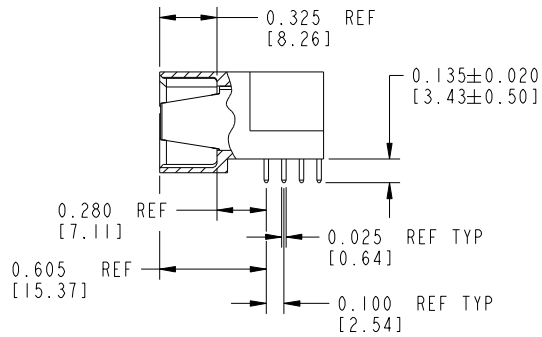
Pro/E

Tous droits strictement réservés. Reproduction ou communication à des tiers interdite sous quelque forme que ce soit sans autorisation écrite du propriétaire. Propriété de c.FCI. Droits de reproduction FCI.

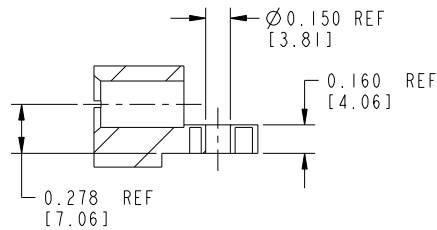


All rights strictly reserved. Reproduction or issue to third parties in any form whatsoever is not permitted without written authority from the proprietor. Property of FCI. Copyright FCI.

PRODUCT NUMBER
51812-001--
Note: ①



SECTION B-B



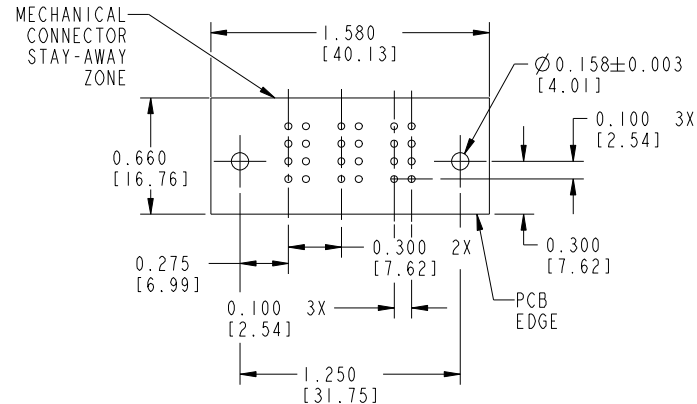
SECTION C-C

CONNECTOR NOTES:

① FOR ADDITIONAL INFORMATION, REFER TO DRAWING NUMBER 51812.

PCB NOTES:

- ALL DIMENSIONS ARE BASIC UNLESS OTHERWISE SPECIFIED.
- ALL THROUGH HOLES ARE LOCATED WITH A TRUE POSITION OF 0.004 [0.10]
- ALL HOLE DIAMETERS ARE FINISHED HOLE SIZE
- Ø0.158[4.01] THROUGH HOLES ARE UNPLATED
- Ø0.0453±0.0010 [1.151±0.025] DRILLED HOLES PLATED WITH 0.0003 [0.008] MIN SnPb or Sn OVER 0.001 [0.03] TO 0.003 [0.08] Cu PLATING TO ACHIEVE A Ø&d853:SUPP_51552-001-PCB HOLE.



RECOMMENDED PCB LAYOUT

mal't code				NOTE 1		tolerances unless otherwise specified		CUSTOMER COPY		FCI www.fciconnect.com	
ltr	ecn no.	dr	date	linear	.XX±.01/0.X±0.3	projection	title 3ACP RIGHT ANGLE SOLDER HEADER				
c				angles	.XXX±.005/0.XX±0.13 .XXX±.0020/0.XXX±0.051	INCH/MM	product family	PwrBlade	code	213	
				dr	J. SHAFFER 7/23/01	scale	size	dwg no	51812-001	sheet	2
				enr	E. TREECE 7/23/01	1:1	A				
				chr	E. TREECE 7/23/01						
				appd	E. TREECE 7/23/01						
sheet index	revision sheet										

Pro/E

cage code 22526